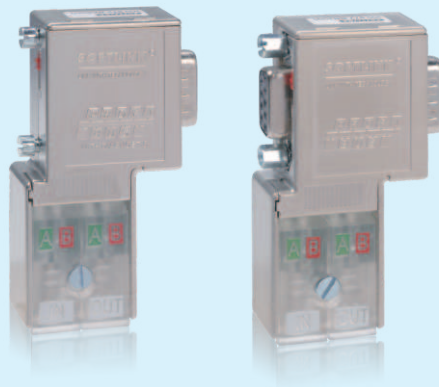




# SOFTLINK · Field-bus Connector

We Make Automation >> >

**SOFTLINK**



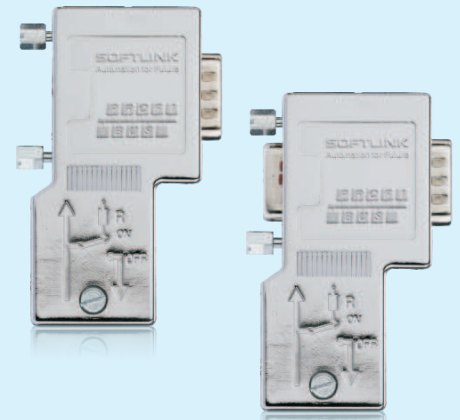
BA2000 & BB2000 90°Outlet



BA3000 180°Outlet



BA1000 & BB1000 35° Outlet



BA1200 & BB1200 90°Outlet



Metal-shielded Field-bus connectors have a strong shielding action to high-frequency interference and guarantee a smooth communication in any harsh industrial environment.

SOFTLINK's metal-shielded Field-bus connectors offer 3 outlet modes: 35°, 90°, and 180°. And the 90° metal-shielded Field-bus connector applies fast-wiring technology, which could save time and improve installation efficiency substantially. Also with transparent caps, it is more convenient to check the connection.

Product	Order NO.
35° outlet, without programming port	300 972-BA1000
35° outlet, with programming port	300 972-BB1000
90° outlet, without programming port	300 972-BA1200
90° outlet, with programming port	300 972-BB1200
90° outlet, without programming port, fast-wiring	300 972-BA2000
90° outlet, with programming port, fast-wiring	300 972-BB2000
180° outlet, without programming port	300 972-BA3000



BA5000 90°Outlet



BA6000 & BB6000 90°Outlet



#### Self-diagnostic fieldbus connectors

Self-diagnostic Field-bus connectors have 3 LED indicators (blue, green and orange) to show the working status or fault status of the network and the Field-bus connectors

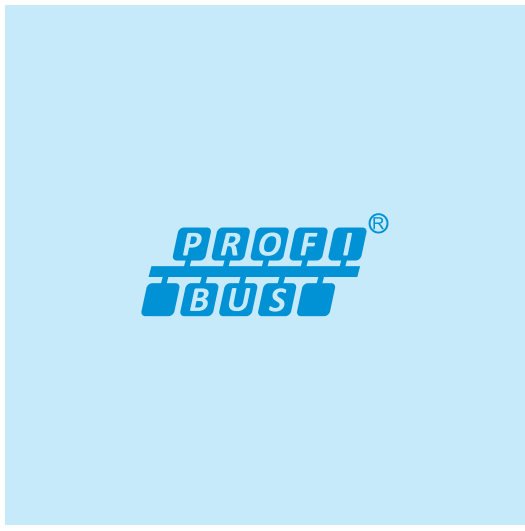
- Orange indicator is termination resistor
- Blue indicator is system hardware connection
- Green indicator is network transmission

Self-diagnostic Field-bus connectors have fast –wiring , which could save installation time

#### Optoelectronic isolation PROFIBUS Field-bus connector

Optoelectronic isolation PROFIBUS Field-bus connector adapts high-speed optoelectronic isolation technique and new RS485 chip to enhance drive capability greatly and minimize EMI in any harsh electromagnetic environment (more effective in communication networks where inverters work). Optoelectronic isolation also solved the problem of frequently damaged communication interfaces caused by the electrical potential difference in network.

Product	Order NO.
90° outlet, without programming port, optical isolation	300 972-BA5000
Self-diagnosis 90° outlet, without programming port	300 972-BA6000
Self-diagnosis 90° outlet, with programming port	300 972-BB6000



### Multi-Angle

Multi-Angle Profibus Field-bus connectors can switch outlet modes between 35° and 90°. Users can adjust outlet angle based on field needs. Transparent caps allow for convenient wiring check.

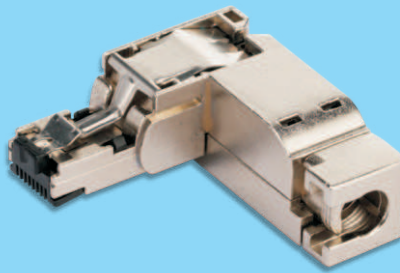
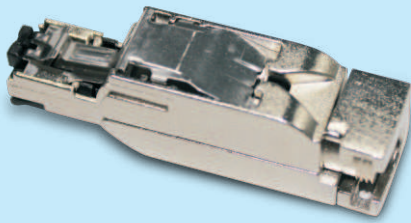
Product	Order NO.
Multi-Angle, without programming port	300 972-BA8000
Multi-Angle, with programming port	300 972-BB8000



### CANopen Field-bus connector

CANopen Field-bus connector achieves the CANopen communication with CANopen cable .The cable core of connector is fixed with bolts, which is more safe and reliable. And it is build-in termination resistors which can be connected or disconnected via a seesaw switch to configure the bus node.

Product	Order NO.
90° outlet	300 972-CA01



## RJ45-Interface Field-bus Connector



- Connect 4-core twisted-pair cable without special tools
- Anti-error correction technology , visible connection zone and colorful knife-type terminals.
- Excellent anti-EMI and deflection performance (metal casing)
- Industrial compatibility design (fastening metal casing, small accessories not easy to be damaged).
- RJ45 plug-in connector with compact and robust structure is suitable for industrial and office environment. It can be connected to Profinet cable quickly and easily.

### Interfaces

Industrial Ethernet FC standard interface  
Industrial Ethernet RJ45 interface  
Baudrate

4 integrated insulation piercing contacts.  
One RJ45 connector  
100MBit/s

### Extension

TP Cable Length 0-100m

### Temperature

Working Temperature -20°C-70°C  
Transport/ Storage Temperature -40°C-80°C  
Relative Humidity < 95%

### Design

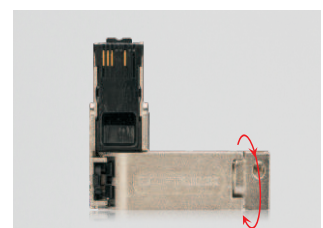
Dimension (W X H x D) mm 13.6X16X53.6  
Weight Approv X.40  
Degree of Protection IP20

### Product

90°Field-bus connector  
90°Field-bus connector

### Order NO.

300-901-BG10  
300-901-BB10







## About SOFTLINK

The Leading Manufacturer of PLC And Motion Control Products from China  
The Reliable Intelligent Manufacturing Solutions Provider

SOFTLINK Automation System Co., Ltd., was founded in 2003. The persistent efforts on R&D make SOFTLINK develop rapidly from a small manufacturer to a provider of complete solutions of PLC & Motion Control products .

### The Excellent Products Quality

The constant pursuit of high-quality products and excellent service, and the strict Quality Management System make it possible for SOFTLINK to output "zero-defect" products. All the products have tested by 48 hours ageing with load and pursuing 100% detection before delivery. All SOFTLINK products pass CE certifications.

### The Comprehensive Industry Applications

Now we can provide SOFTLINK 300 PLC, IDEABOX control system, Remote I/O, Field-bus connectors etc. All the products are sold around the world and are widely used in various fields.

### The Professional Technical Support Team

24 branches cover more than 50 countries and regions, the professional technical support team can offer the timely technical support for customers all over the world.

For more information, please visit: [www.softlink.cn](http://www.softlink.cn)

SOFTLINK Automation System Co., Ltd.

6th Floor, Huiheng Building, Hi-tech  
South 7th Rd., Hi-tech Park, Nanshan  
Dist., Shenzhen, 518057 China.

Tel: +86-755-2533 6812/13/15

Fax: +86-755-2533 3788

---

**Website: [www.softlink.cn](http://www.softlink.cn) E-mail: [info@softlink.cn](mailto:info@softlink.cn)**

---

SOFTLINK, IDEABOX, SOFTPRO are registered trademarks of SOFTLINK Automation System Co.,Ltd.